

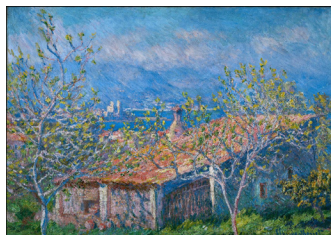
FOR IMMEDIATE RELEASE
May 14, 2007

Largest Showing of Historical European Art Ever Presented in Vancouver Coming to Vancouver Art Gallery

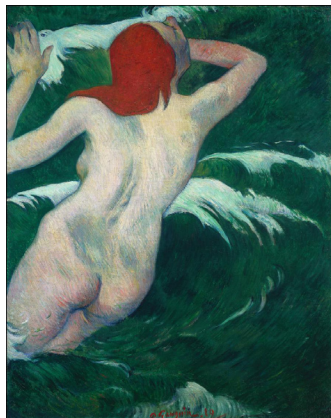
Media preview and breakfast June 8, 2007 at 9AM



Henri Fantin-Latour
Marie-Yolande de Fitz-James, 1867
oil on fabric
The Cleveland Museum of Art,
Gift of Lewis C. Williams
© The Cleveland Museum of Art



Claude Monet
Gardener's House at Antibes
(*Maison de jardinier a Antibes*), 1888
oil on fabric
The Cleveland Museum of Art,
Gift of Mr. and Mrs. J.H. Wade
© The Cleveland Museum of Art



Paul Gauguin
In the Waves (Dans les vagues), 1889
oil on fabric
The Cleveland Museum of Art,
Gift of Mr. and Mrs. Powell Jones
© The Cleveland Museum of Art

VANCOUVER, BC — The **Vancouver Art Gallery** will present the most comprehensive showing of European painting and sculpture in Canada this summer with the exhibition ***Monet to Dalí: Modern Masters from the Cleveland Museum of Art***. On view from **June 11 to September 16, 2007**, the exhibition includes paintings by such masters as Cézanne, Gauguin, Manet, Monet, Picasso, Seurat and van Gogh, representing the largest showing of European art ever presented in Vancouver.

Drawn from one of the finest museum collections of its kind, the exhibition consists of more than 80 paintings, as well as drawings and sculpture, illustrating key examples from the European Modernist movement. Organized into four areas, *Monet to Dalí* covers a century of art making from 1864 to 1964, showcasing important work by major Impressionists, Post-Impressionists, early Modern sculptors and avant-garde artists interested in Dadaism, Cubism and Surrealism. The exhibition reveals an artistic innovation that profoundly changed the course of European art history and established the new path of modern art across the western world.

“We are extremely proud and excited to bring this exceptional showing of European modern art to Vancouver,” said Vancouver Art Gallery director Kathleen Bartels. “This exhibition will make Vancouver a cultural hotspot this summer. Seeing this superb work together in one place is a once-in-a-lifetime experience that will attract more than 200,000 visitors seeking a personal encounter with some of history’s finest artists.”

The works in *Monet to Dalí* represent the core of the Cleveland Art Museum’s collection of late 19th- and early 20th-century European art – one of the most significant collections in the world. The exhibition will provide a rare occasion for Canadians to view a comprehensive gathering of paintings by some of the most important modern masters of the last two centuries. This significant collection of works is touring exclusively during the Cleveland Museum of Art’s renovation and expansion project. Opening in Beijing, China, the exhibition travelled to Tokyo and Seoul, before its presentation at the Vancouver Art Gallery. It will travel on to Cleveland for its United States debut as the inaugural exhibition at the CMA’s newly expanded facility.

Included in *Monet to Dalí* are a number of significant groupings of works by Claude Monet, Paul Cézanne, Vincent van Gogh, Auguste Rodin and Pablo Picasso, among others. In the diversity of styles, the great enterprise of art is presented through many different lenses, filtered by different disciplines. Of great importance are the geographic centrality of Paris in the development of new artistic ideas and the defining effect of French culture, both of which were

Media Contacts:

Andrew Riley
Public Relations Manager
604-662-4722
ariley@vanartgallery.bc.ca

Dana Sullivant
**Director of Marketing &
Communications**
604-662-4721
dsullivant@vanartgallery.bc.ca

influential in northern Europe and the British Isles. The exhibition traces the profound impact Impressionism had on the relationship of painting to reality. It also illustrates the accelerated artistic development that was especially dramatic between 1850 and 1950, including the invention of new pictorial structures such as Cubism's innovative depictions of three-dimensional space and the use of colour to illuminate the visual experience.

Highlights include: Pierre-Auguste Renoir's *Romaine Lacaux* (1864); Claude Monet's *The Red Kerchief: Portrait of Mme. Monet* (1868–70); Berthe Morisot's *Reading* (1873); Auguste Rodin's *Heroic Head of Pierre de Wiessant, One of the Burghers of Calais* (1886); Vincent van Gogh's *Poplars at Saint-Rémy* (1889); Paul Gauguin's *In the Waves* (1889); Paul Cézanne's *Brook* (c. 1895–1900); Pablo Picasso's *Bottle, Glass, and Fork* (1911–12); Amedeo Modigliani's *Portrait of a Woman* (c. 1917–18); Henri Matisse's *Festival of Flowers, Nice* (1923); Karl Schmidt-Rottluff's *Self-Portrait with Hat* (1919) and Salvador Dalí's *The Dream* (1931).

These works represent the beginning of the concept that form can be represented through means other than illusion, and that art can visualize aspects of visual experience that would otherwise remain hidden. Following the developments of the Impressionists and Post-Impressionists, Cubist artists created a visual language that dramatically expanded the capacity of artists to actively engage the visual and change the world instead of passively accepting its appearance.

This exhibition has been organized by the Cleveland Museum of Art. The Cleveland Museum of Art receives operational support from the Ohio Arts Council.

The Gallery gratefully acknowledges the support of the following exhibition sponsors:

Presenting Sponsor: 

Supporting Sponsor: 

Friends:  | 

Public Programming for *Monet to Dalí*

Public Talk: William Robinson, curator of *Monet to Dalí*
June 10 at 4pm, Robson Square Theatre

Join the curator of *Monet to Dalí* for an exploration of one of the richest and most innovative periods of European painting as reflected in the collection of the Cleveland Museum of Art. William Robinson has been Head of European and American Paintings at the Cleveland Museum of Art since 2003, and has worked in the Museum as a curator of Modern European Art for more than 15 years. He has published an essay in the catalogue *Picasso: The Artist's Studio*, and is currently working on a major research project focused on van Gogh's work *The Large Plane Trees*.